

How to Maximize Program Effectiveness Using Performance-driven Conservation Tools and Practices

A Community on Ecosystem Services

Washington DC

December 4, 2018

Eoin Doherty

Wildlife & Land Practice Lead

edoherty@enviroincentives.com



Washington Stormwater Public-Private Partnership Feasibility Review

Idaho Sage-Steppe Mitigation Program

Peaks to People Water Fund
Colorado Habitat Exchange

Brandywine-Christina Healthy Water Fund

Klamath Tracking and Accounting Program

Lake Tahoe Clarity Crediting Program

NEVADA DIVISION OF ENVIRONMENTAL PROTECTION

El Headquarters South Lake Tahoe, CA

El Mountain Office Denver, CO

El Eastern Office Washington D.C.

USDA United States Department of Agriculture
Natural Resources Conservation Service

Central Valley Habitat Exchange

Mokelumne Environmental Benefits Program

San Diego Alternative Compliance Program

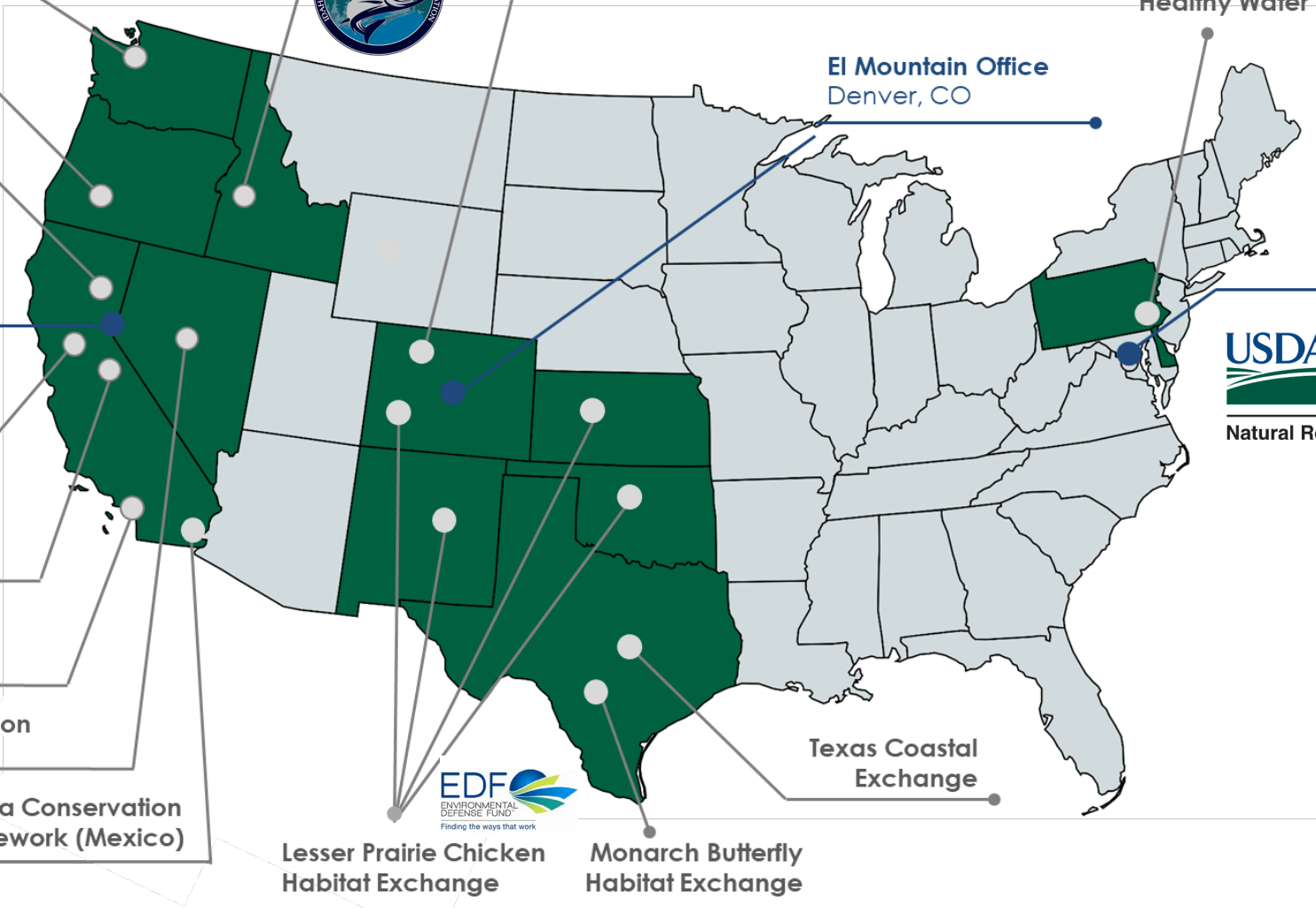
Nevada Conservation Credit System

Colorado Delta Conservation Funding Framework (Mexico)

Lesser Prairie Chicken Habitat Exchange

Monarch Butterfly Habitat Exchange

Texas Coastal Exchange



PERFORMANCE DRIVEN PROGRAMS



FUNDAMENTAL ELEMENTS OF PERFORMANCE-DRIVEN CONSERVATION®

- ❑ GOALS
- ❑ METRICS
- ❑ INCENTIVES
- ❑ REPORTING
- ❑ ADAPTIVE MANAGEMENT AND LEARNING



PERFORMANCE METRICS

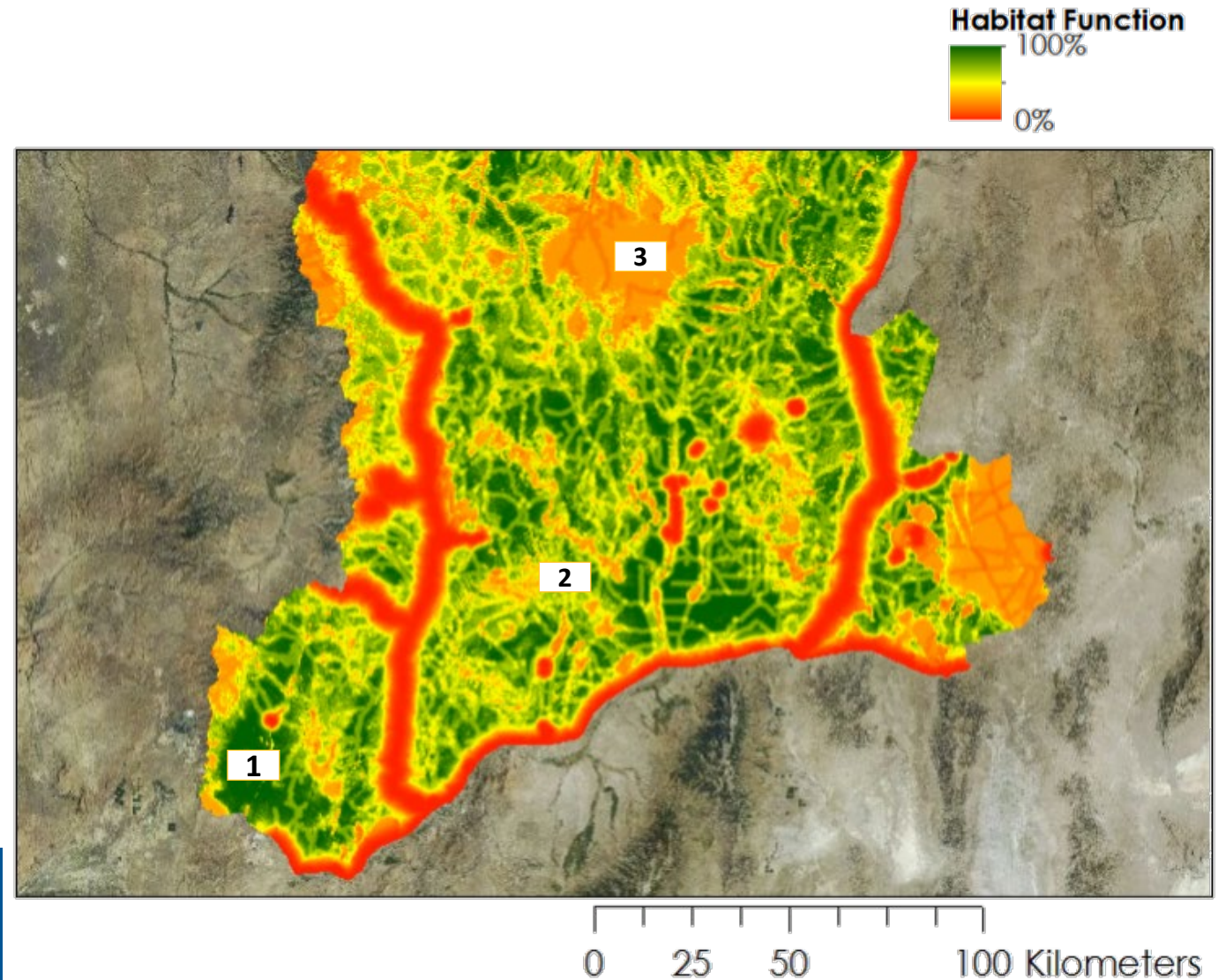
LINK ACTIONS TO PROGRAM GOALS



PERFORMANCE METRICS

INFORM CONSERVATION SITE SELECTION & DESIGN

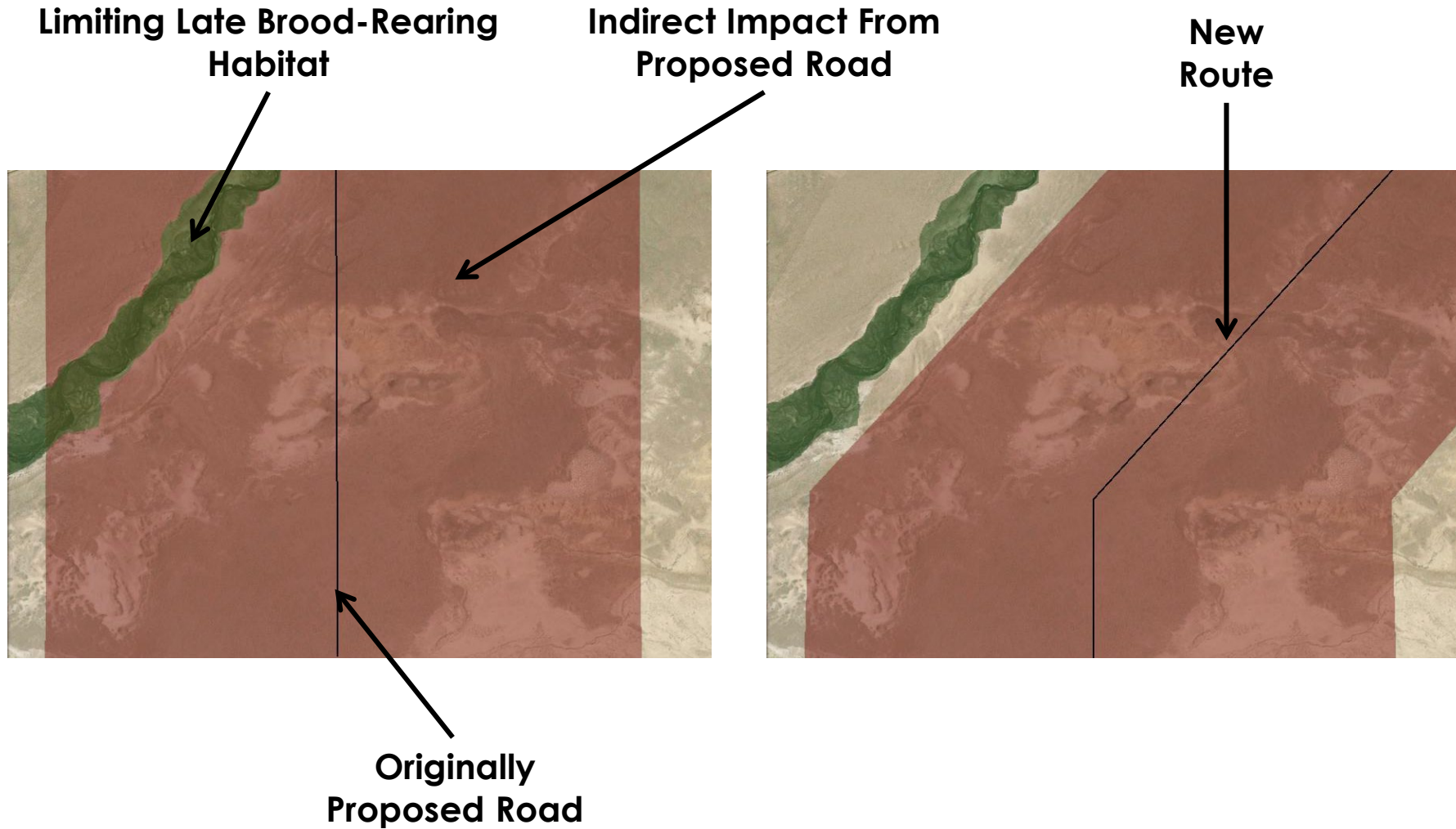
Project	Acres	Credits
1	1,000	900
2	1,000	650
3	1,000	300





PERFORMANCE METRICS

INFORM DEVELOPMENT PROJECT DESIGN



PERFORMANCE REPORTING

INSPIRE ACTION & BUILD STAKEHOLDER TRUST

Lake Clarity Credits Awarded

By: Jurisdiction

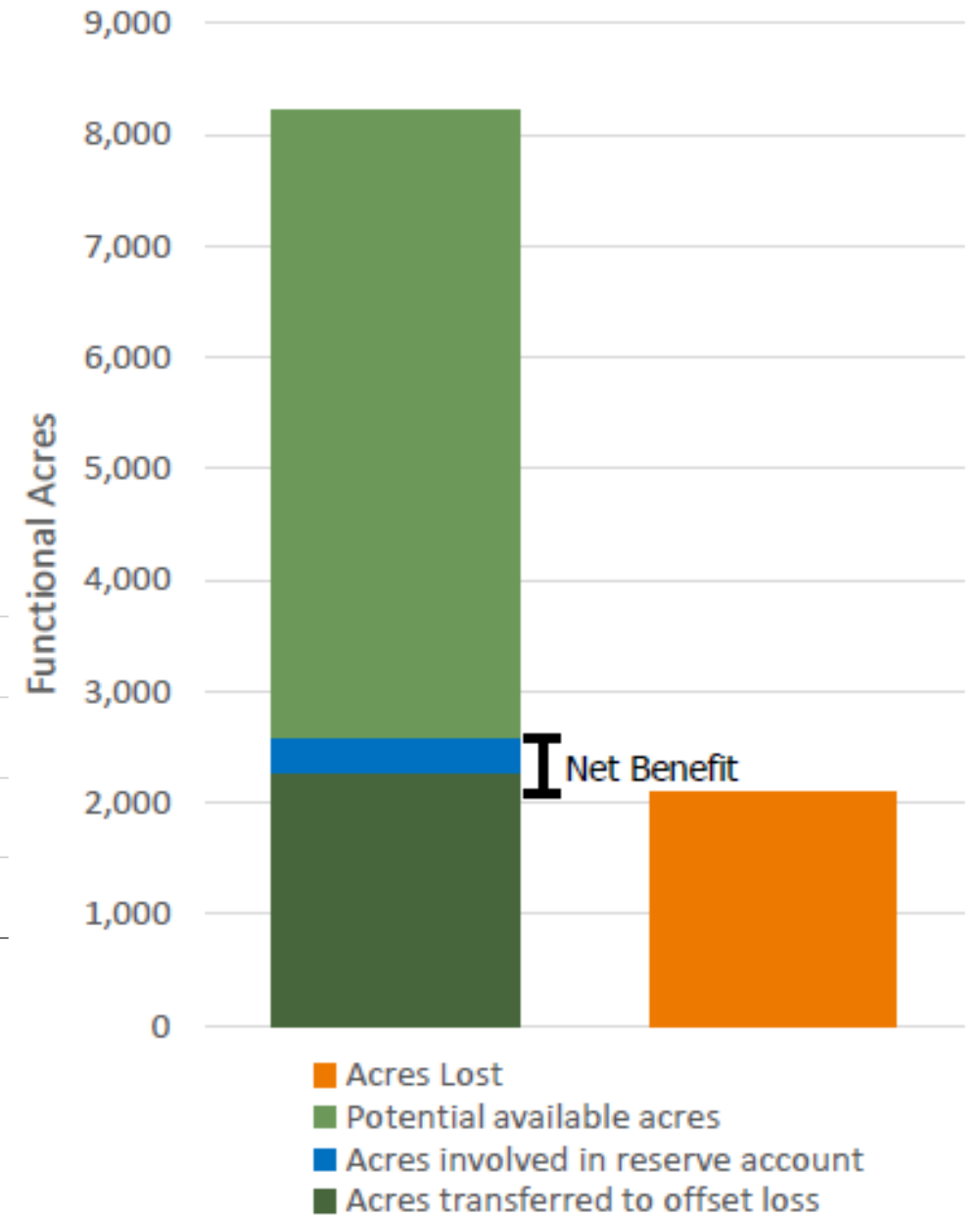
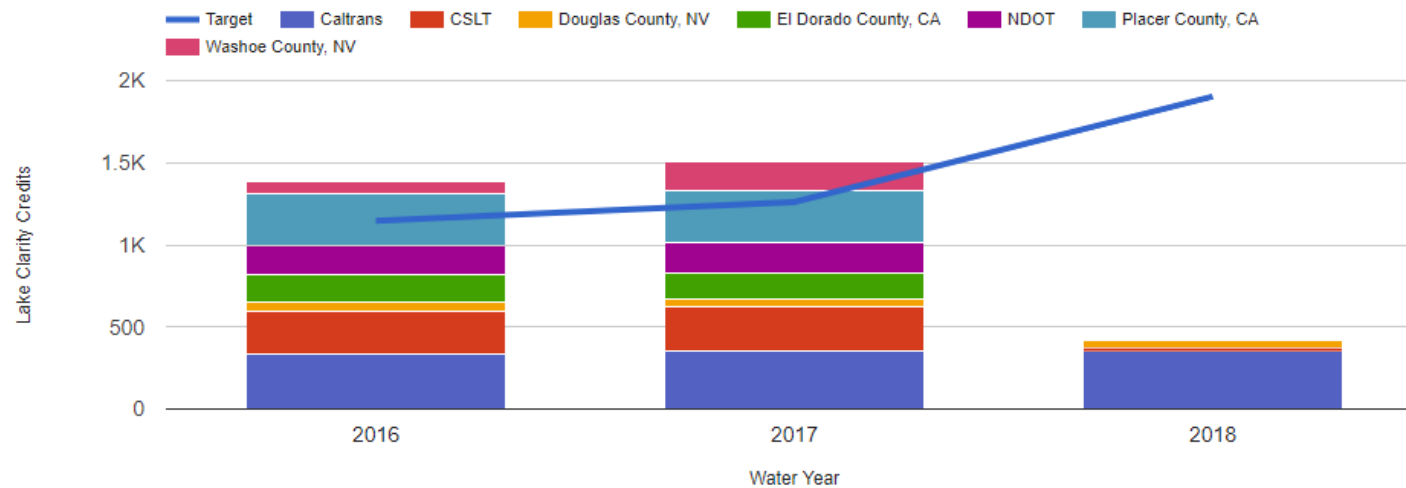
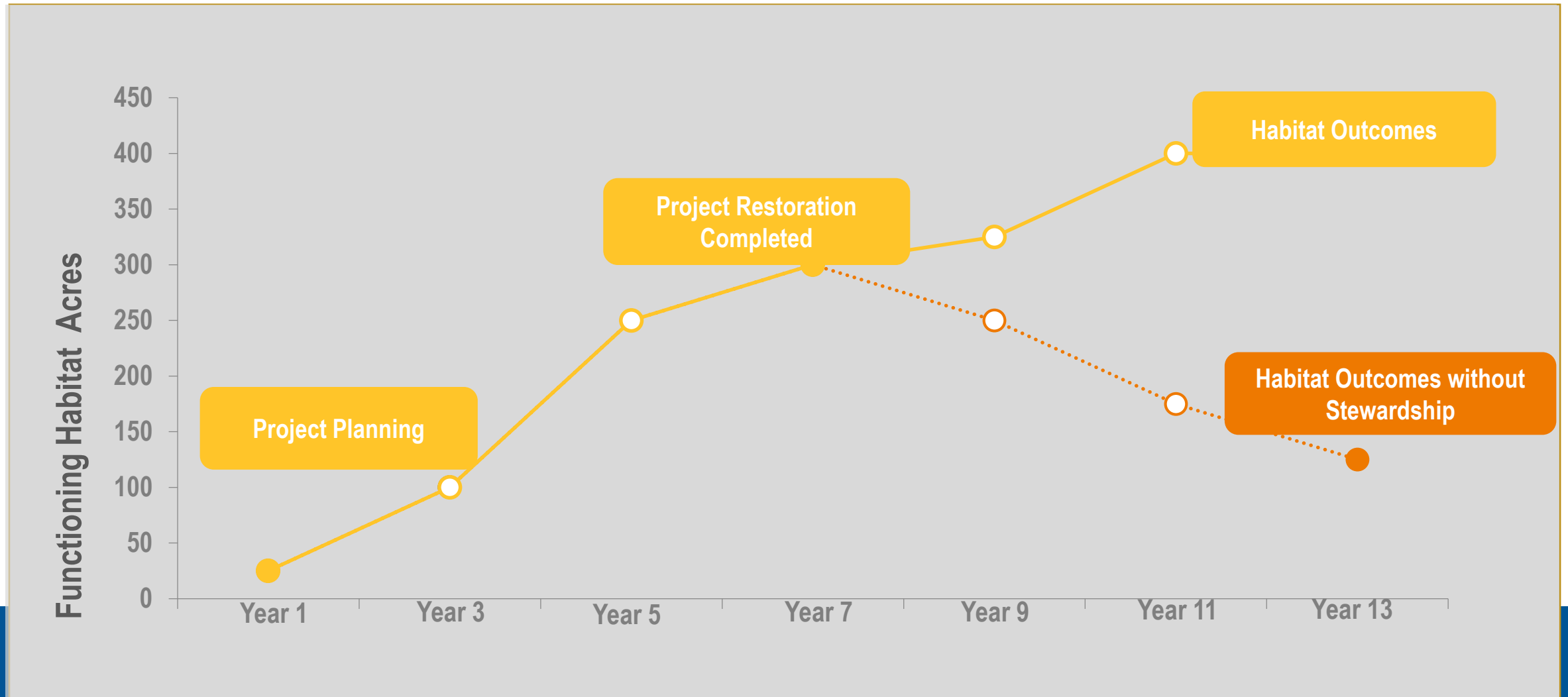


FIGURE 6: Cumulative Functional-Acre Loss, Functional-Acre Gain and Net Benefit generated by the Credit System (June 2018)

INCENTIVES

DELIVER LONG-TERM HABITAT BENEFITS



TECHNOLOGY OPPORTUNITIES

- Streamline user and administrative processes
- Improve user experience and adoption
- Increase repeatability and accuracy
- Improve project tracking
- Facilitate programmatic reporting and continual improvement

The screenshot displays the 'Lake Tahoe Stormwater Tools' web application. The header includes the 'Lake Tahoe INFO' logo, 'Stormwater Tools' with a dropdown arrow, and user navigation links for 'Data Center', 'Welcome Eoin Doherty', and 'Manage LT Info'. Below the header, there are navigation options for 'Explore' and 'Program Info'. A breadcrumb trail shows 'CREDITS' (with a flag icon), 'KING'S BEACH', and '2016 DECLARATION'. The main content area is titled 'OVERVIEW' and contains a table of key metrics:

Jurisdiction	Placer County, CA
BMP Registration	King's Beach
Declaration Status	Awarded
Credits Awarded	174
Credit Potential	174
Percent of Credits Available to Declare	100%
Credits Available to Declare	174

At the bottom of the overview section, there is a header for 'TREATMENT BMPS'.